

**TWH**  **BEA**<sup>®</sup>  
TENNESSEE WALKING HORSE BREEDERS' & EXHIBITORS' ASSOCIATION<sup>SM</sup>

For additional information, contact  
Tennessee Walking Horse Breeders' and Exhibitors' Association<sup>SM</sup>  
P. O. Box 286 • Lewisburg, Tennessee 37091-0286

931-359-1574 • 931-359-7530 Fax

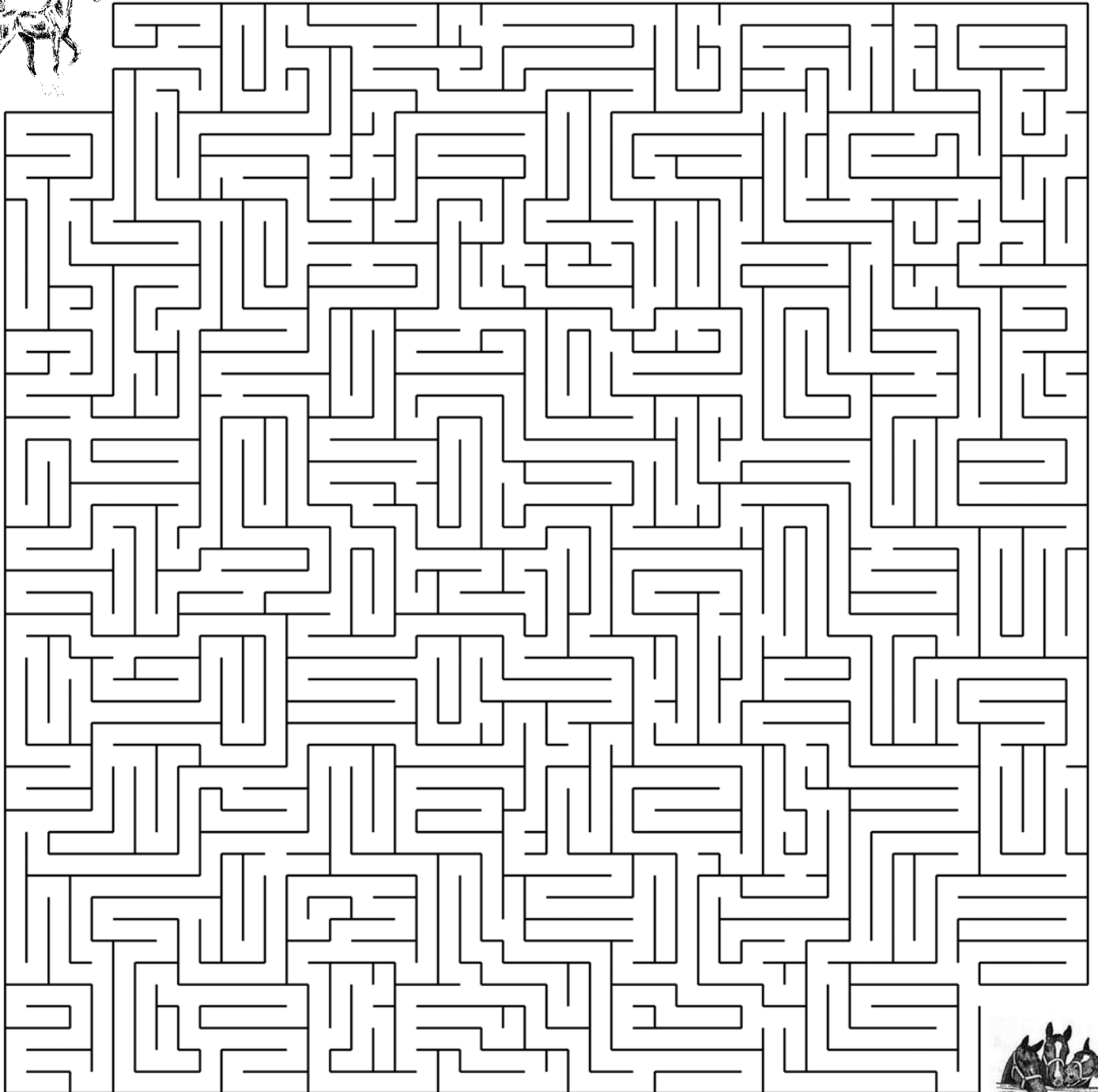
**[www.twhbea.com](http://www.twhbea.com)**

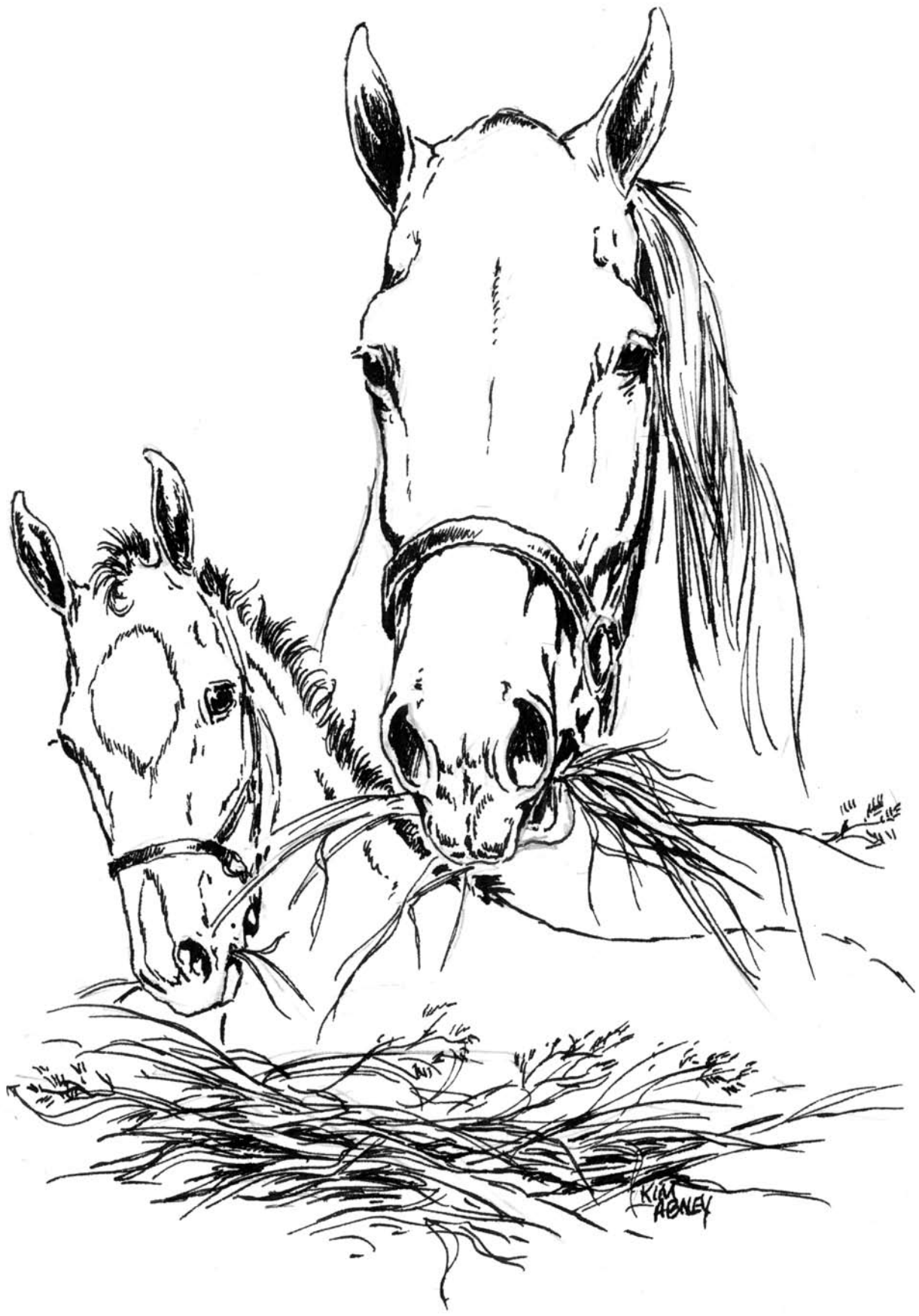
**Help the Foal find his Stablemates.**

**Find the correct path through the maze.**



© 2010 K&N





This young foal has white markings down the front of his face. The Tennessee Walking Horse comes in many colors . . . bay, black, buckskin, champagne, chestnut/sorrel, grey, palomino, roan. What color will you make this foal?

# ALPHABET QUIZ

See if you can match these clues to the letters they start with.



Mythical horned equine

A \_\_\_\_\_

Driving tack

B \_\_\_\_\_

Slowest gait

C \_\_\_\_\_

Cowboy breed

D \_\_\_\_\_

Horse doctor

E \_\_\_\_\_

Rider's footrest

F \_\_\_\_\_

What a horse wears

G \_\_\_\_\_

Latin word for horse

H \_\_\_\_\_

Soft part of a hoof

I \_\_\_\_\_

Rocking chair \_\_\_\_\_

J \_\_\_\_\_

Tack worn on the head

K \_\_\_\_\_

Small horse

L \_\_\_\_\_

Horses around 12 months

M \_\_\_\_\_

English cinch

N \_\_\_\_\_

Used for steering

O \_\_\_\_\_

Ancient horse expert from 4 BC

P \_\_\_\_\_

Point of a horse's nose

Q \_\_\_\_\_

May be part of a horse's diet

R \_\_\_\_\_

Person who ties your horse

S \_\_\_\_\_

Striped equine

T \_\_\_\_\_

Horse's front teeth

U \_\_\_\_\_

Where horse shows are held

V \_\_\_\_\_

Famous "blue grass" state

W \_\_\_\_\_

Western canter

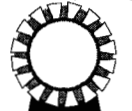
X \_\_\_\_\_

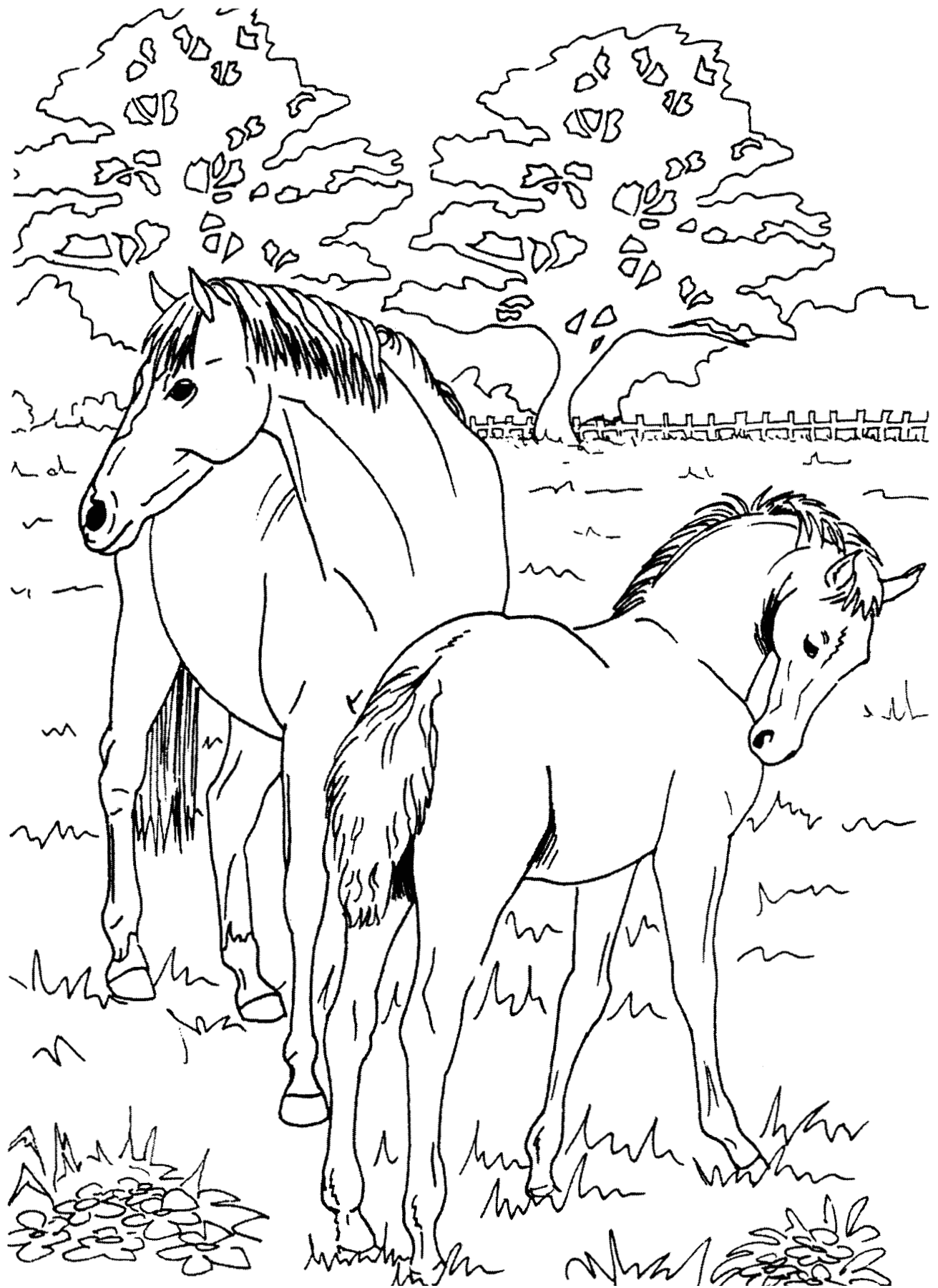
Female parent of a horse

Y \_\_\_\_\_

Affectionate action by a horse

Z \_\_\_\_\_

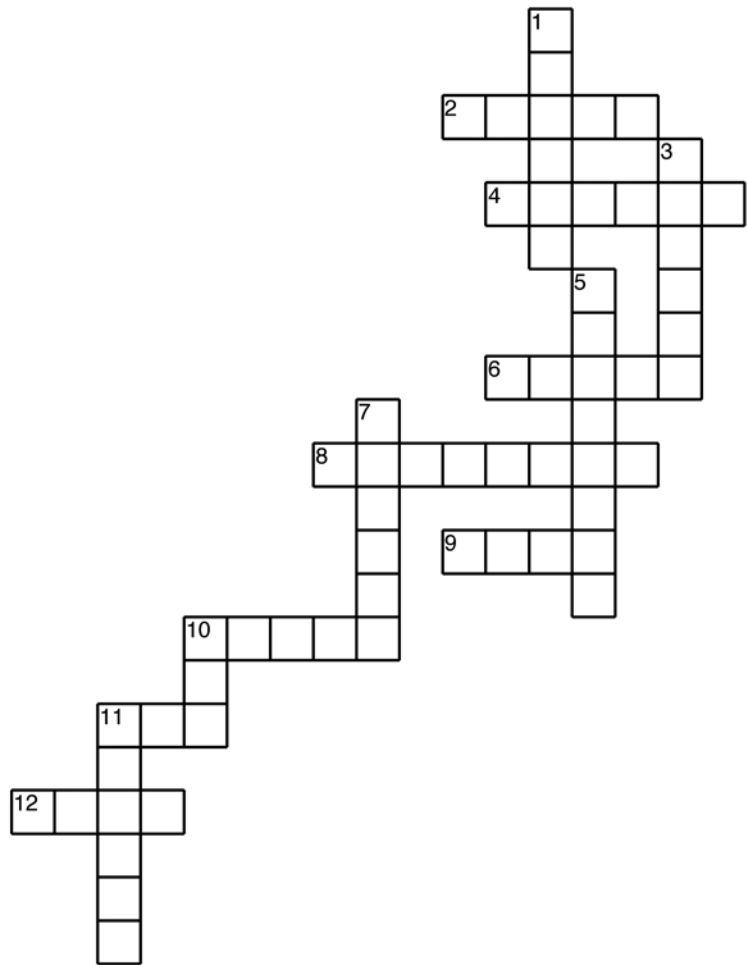




A baby horse is called a foal. The mother is called a mare. This foal is ready to play as long as his mother is close by! Do you think the mare and foal are the same color?

# Ready for Show Season

Complete the puzzle using the clues shown below.

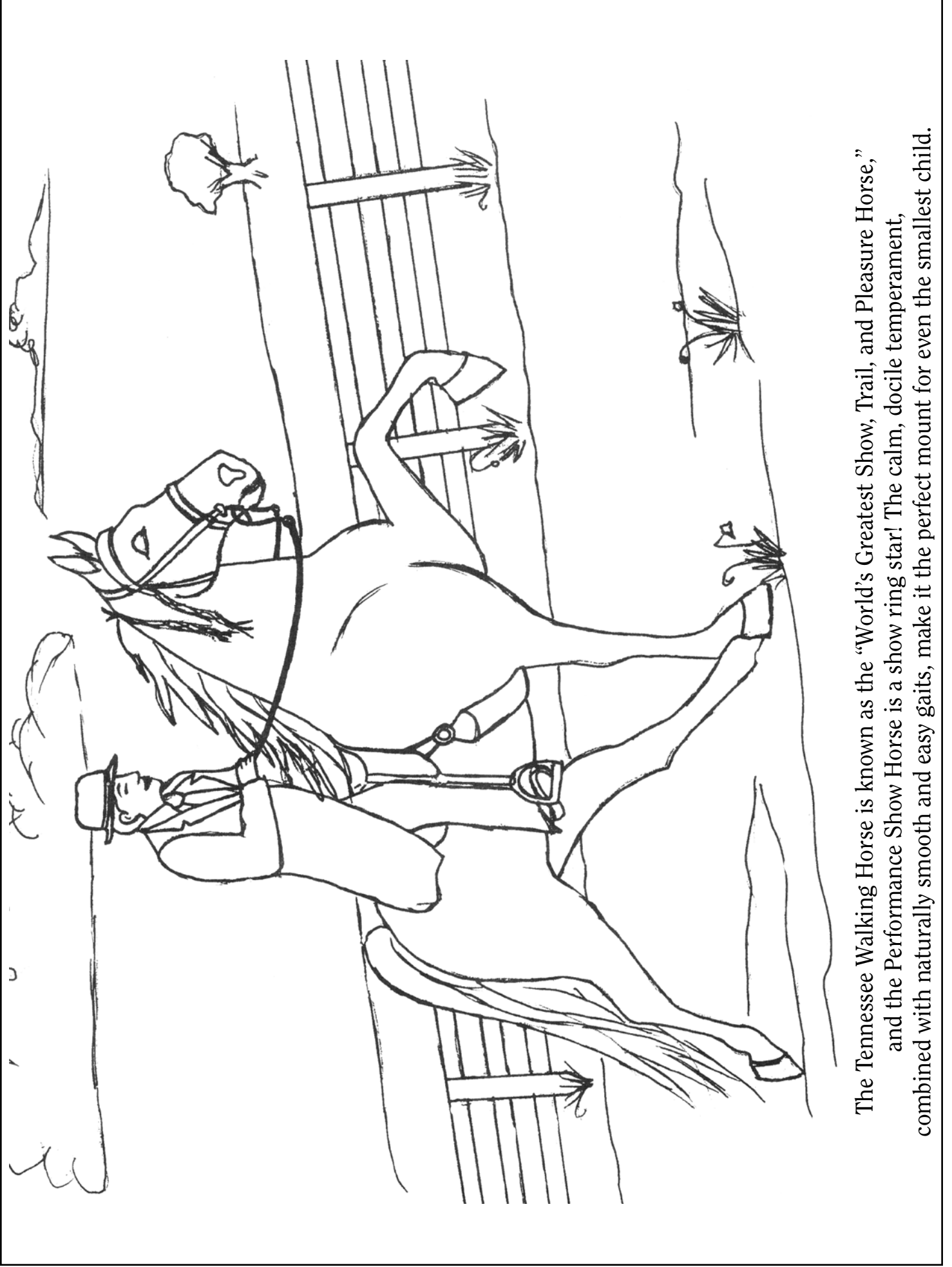


## Across

2. Type of hat
4. Rider sits in this
6. Used for steering
8. English riding boots
9. You clean your tack with saddle ?
10. Riding suit
11. Metal part of bridle worn in horse's mouth
12. Artificial aid

## Down

1. Habit worn for Championship classes
3. Worn on the hands
5. Riders rest their feet in them
7. Worn on the head with a formal suit
10. Worn on the rider's head
11. Tack for the horse's head



The Tennessee Walking Horse is known as the “World’s Greatest Show, Trail, and Pleasure Horse,” and the Performance Show Horse is a show ring star! The calm, docile temperament, combined with naturally smooth and easy gaits, make it the perfect mount for even the smallest child.



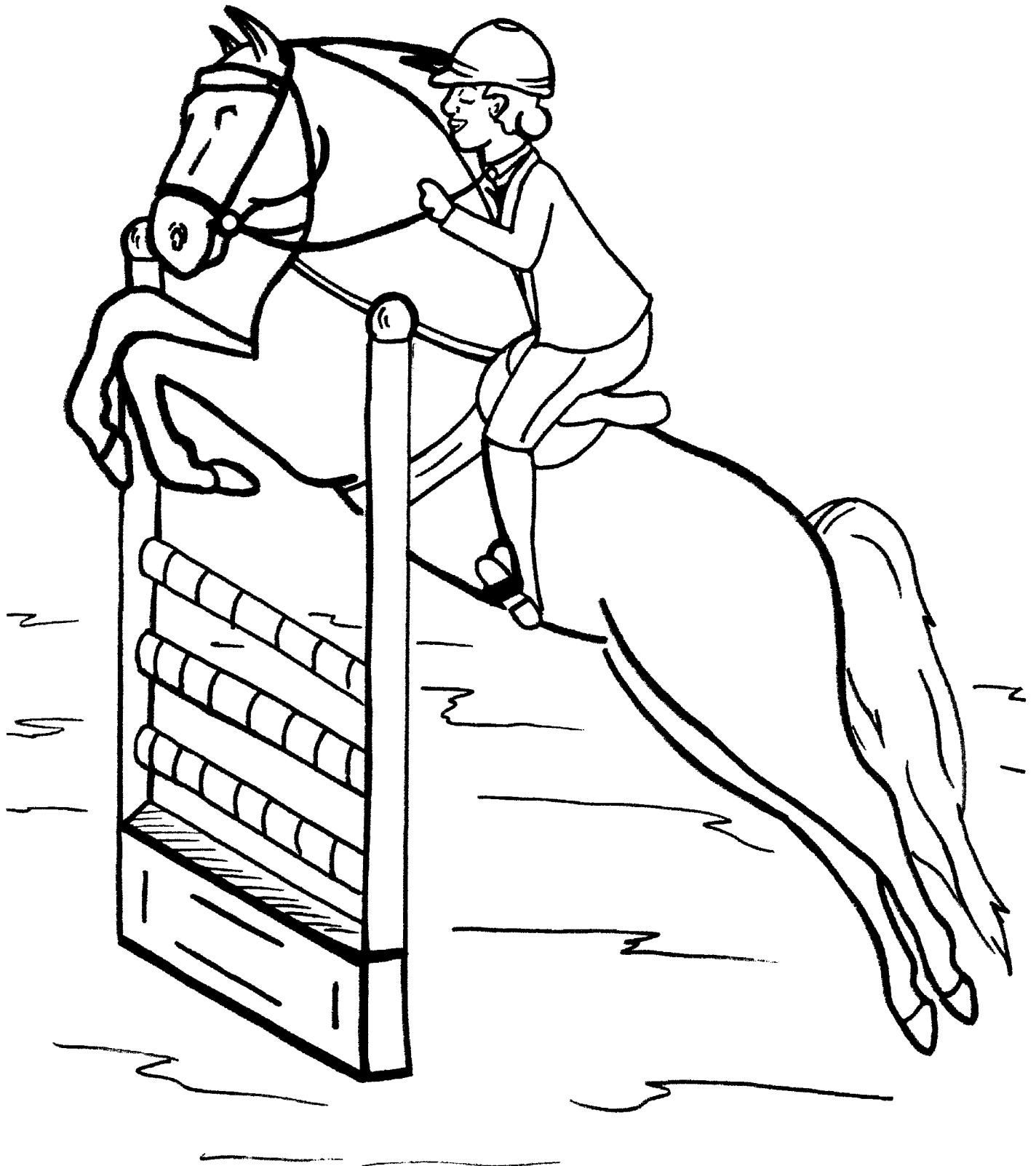
## The Most Versatile Horse in the World

Find the hidden words within the grid of letters.

T H E T E N N E S S E E W A L K I N G H R S O R S S E M C N  
 M T P A R K P L E A S U R E U A L C E E H E T Y W E H O N O  
 K S O M G Y Q B M N J Y D D A M B Y T O R W K E F C U Q S I  
 E C N A M R O F R E P D E T I M I L W U O I R T G N D A Q T  
 X J Z Y Y O Q N Y W A P C M G H A M S E Z W F K T E J Q I A  
 L E D O M A V N C S D V W M A H A A T M S E H R O F B M F T  
 P E R F O R M A N C E J H G B N E R Z E G H Y U C R T L S I  
 N C N J C W V Q W I T H X G S L Y D O D Z P C K O E H Z T U  
 T A A L S M Z R A U L G N H P P H D U E L M Z D U V C F Q Q  
 F N R D N Q A N A R N D I W Z U Q V D E S U S O L O Y O E E  
 E F P E T T Z I Y D Z P O U J C I I A N X N I B T X T L A V  
 T Z S A T S W C D V L H U V K Y C S A D E H D Y Q Q A P X I  
 U C D Q B N Y Y O K S T L P Z F U P Q Q G U I Y I R P U D E  
 H B N Z K L A N Y D U V X O M R A H O Q U M P U V G C D N A  
 H G J J A X Z C A S G Z C L E G M P T O G V R H X T K Q B H  
 F K V J K R L N H L I N O F E N E P M B K Z P C E I Y H A N  
 U C J S B C H P U Z F F D R Z K D D I Z V V N N C U Q S R I  
 Z N R T C M M R J Q L U U E X Q A M R B P P N Z K L G I R W  
 A X L I O Y R N U I H S O O S M L R E I N I N G L Z K V E A  
 I U A E C E U T J N A E M J D A L B G T I S Y F W W Q Z L T  
 Z D Z Q H S N C Z E I S E V S Z I K L A W T A L F C W N R E  
 H L S U G N N M L I F T R A I L O B S T A C L E S E H X A R  
 S D E L T C I P T W A Z E S K D N U W F I G N I V I R D C G  
 T T P I S B N A E L Y A Q D B M C F X O Q L M L B Z D U I L  
 H O X C S R G C L A E R U S A E L P N O I T A T N A L P N A  
 S G A A E O W A T R A I L J V G A P O L E B E N D I N G G S  
 D Y M T R G A D X A U V P R Y K S A J Y F O E Q E U H B T S  
 S W S R D B L E R X R A I V R A S L F H Z L X R R B E O G U  
 O E V J Z X K M O B P G I D A C Q U L X Z N Z Z W Y W F S R  
 W X T R P G M Y F C P C O S G I X V P I C Y C I P X D V N J

---

Academy	Flat Walk	Park Pleasure	Showmanship
Barrel Racing	Halter	Performance	Show Pleasure
Canter	Limited Performance	Plantation Pleasure	Trail
Country Pleasure	Medallion Class	Pole Bending	Trail Obstacles
Driving	Model	Reining	Water Glass
Equitation	Over Fences	Running Walk	Western Pleasure



*Jackie  
Osborne*

The Tennessee Walking Horse continues to prove itself as one of the most versatile horses. The breed's gentle disposition, kindly manner, and willingness to please make it the perfect mount for showing, trail riding, jumping, barrel racing, pole bending, reining, pleasure driving, and other versatility events.

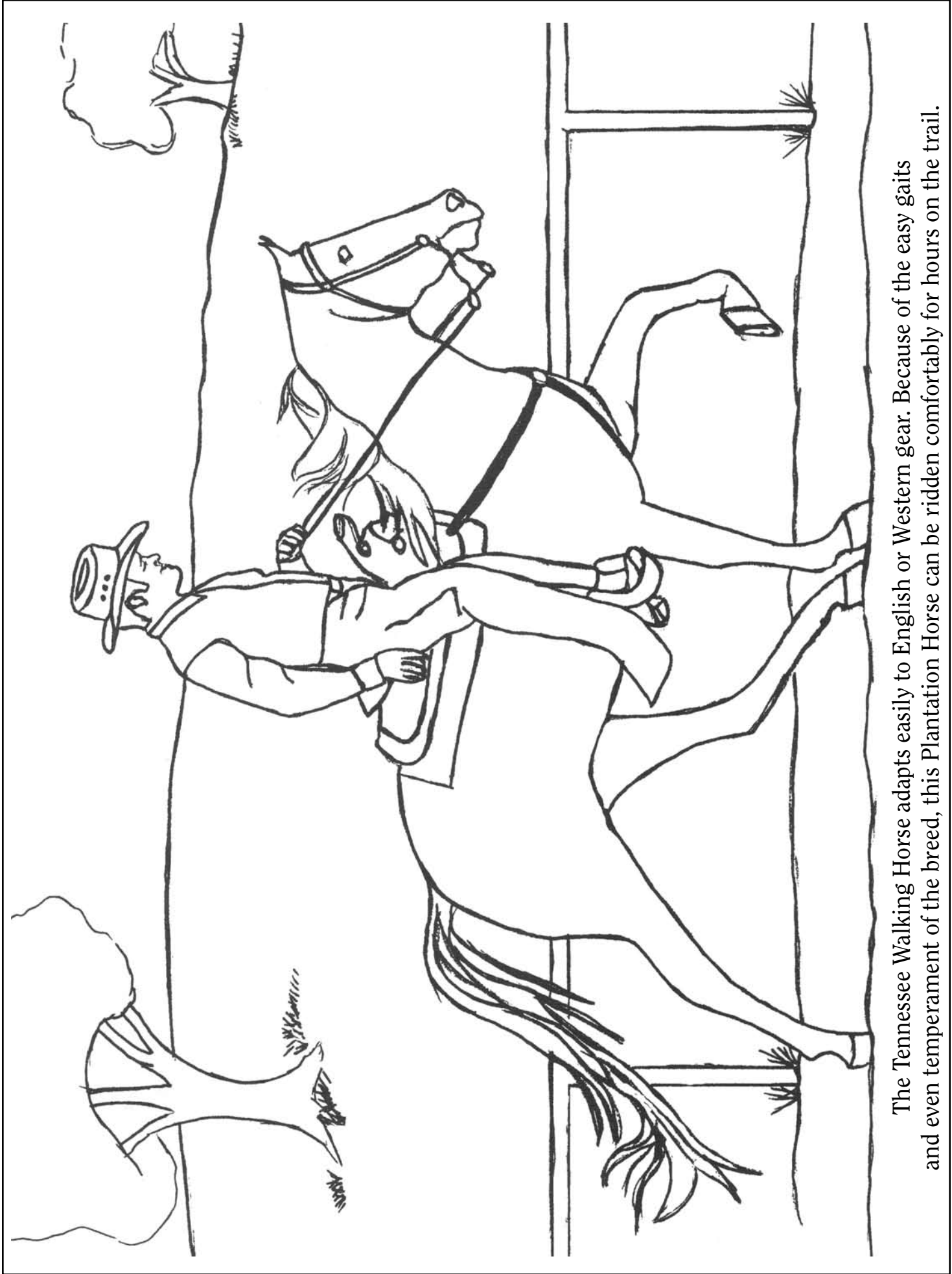
# Tennessee Walking Horse

How many words can you find inside the words Tennessee Walking Horse?

TEN

NET





The Tennessee Walking Horse adapts easily to English or Western gear. Because of the easy gaits and even temperament of the breed, this Plantation Horse can be ridden comfortably for hours on the trail.



## Word Search Fun

Unscramble each word. Then use the marked letters to solve the second puzzle.

ITB

EBDIRL

10 4

CRNTAE

3

CCINH

11

COTL

17

FYILL

GHITR

6

DDSEAL

5

MERA

14 13

LSTALNOI

2

SNPI

16

SRTA

8

HEATLR

12

7

PSURTIR

15

RISNE

9

WKAL

1

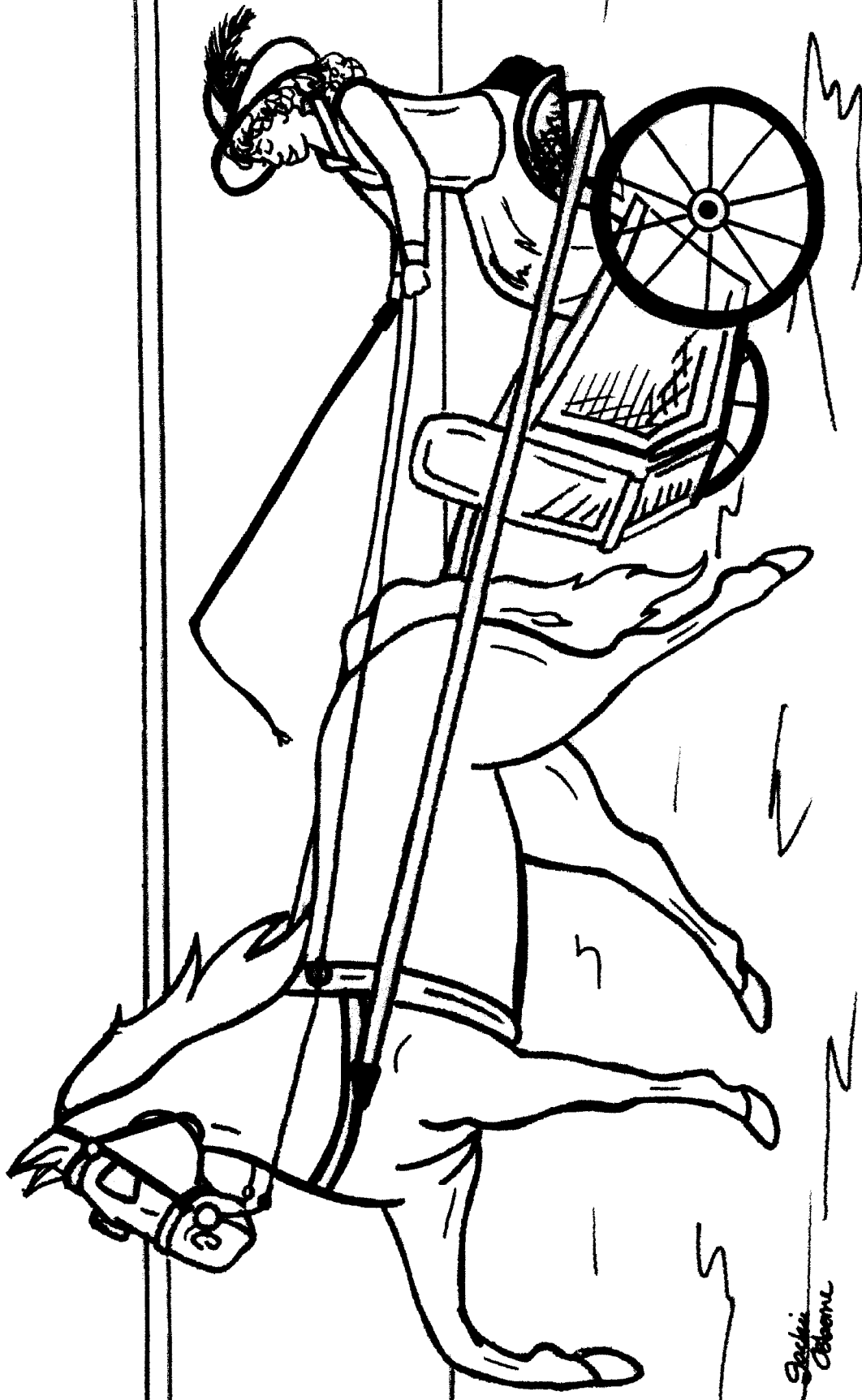
NTCREA

18

1 2 3 4 5

6 7 8 9 10

11 12 13 14 15 16 17 18



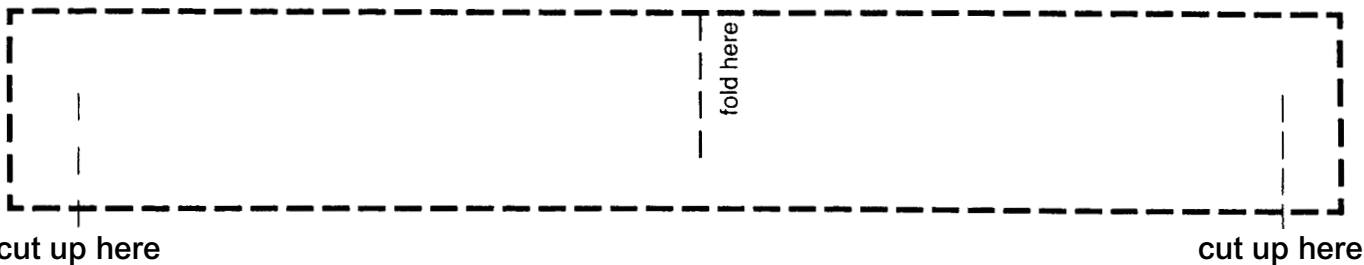
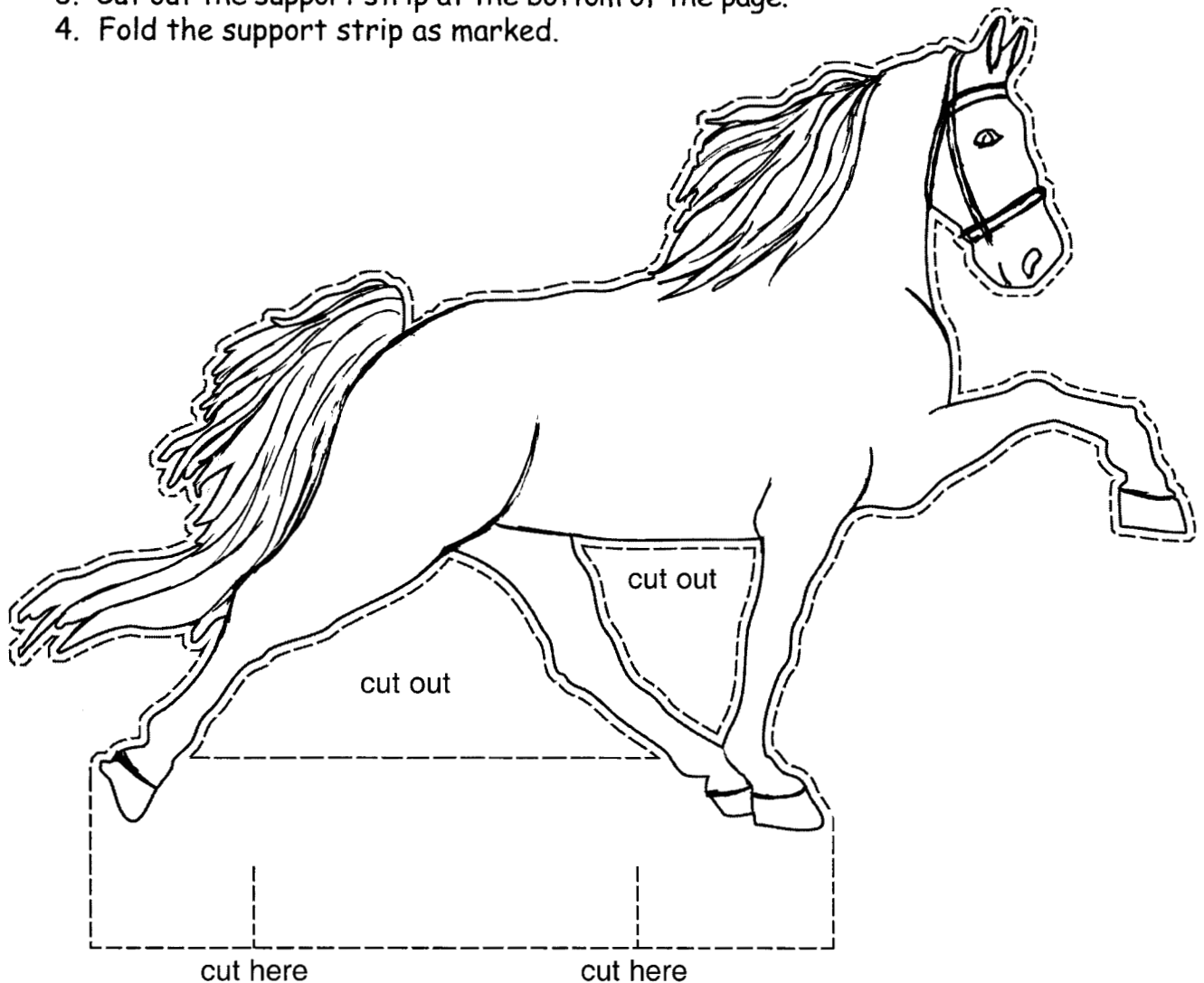
The Tennessee Walking Horse was developed by Tennessee farmers to pull their family carriages and wagons and to check on their crops. The breed gained wide popularity for the ability to stride faultlessly over the hills and through the valleys of the rocky Middle Tennessee terrain.

# HORSE CRAFTS

## MAKE A "STAND UP HORSE"

Instructions - Paste or photocopy this page onto thin card stock.

1. Color the horse in your favorite color.
2. Cut around the dotted line
3. Cut out the support strip at the bottom of the page.
4. Fold the support strip as marked.



# Careers In The Horse Industry

Words in each line are merged together. Find the original words.

Hint: The letters that make up each word are still in their original order.

TPrroafessiinoenral	<input type="text"/>	<input type="text"/>	
Rilndstruincgtor	<input type="text"/>	<input type="text"/>	
DWeseigbner	<input type="text"/>	<input type="text"/>	
EJqouuirnnaleist	<input type="text"/>	<input type="text"/>	
EVeqturiinanreian	<input type="text"/>	<input type="text"/>	
EAqrutiinset	<input type="text"/>	<input type="text"/>	
EDqenutiisnte	<input type="text"/>	<input type="text"/>	
EquAlgeinsunrnatnece	<input type="text"/>	<input type="text"/>	<input type="text"/>
FMAanragmer	<input type="text"/>	<input type="text"/>	
ASdavelretsising	<input type="text"/>	<input type="text"/>	
EMqaussiangee	<input type="text"/>	<input type="text"/>	
EPquhiontographer	<input type="text"/>	<input type="text"/>	
SMantaagleliorn	<input type="text"/>	<input type="text"/>	

## Answers to the Tennessee Walking Horse Word Games

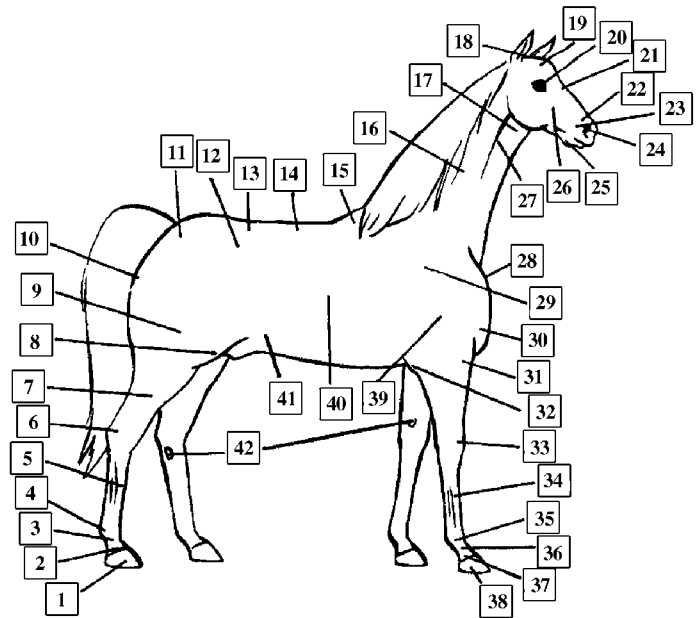
can be found at

[www.twhbea.com/youth/youthHome.aspx](http://www.twhbea.com/youth/youthHome.aspx)



# Points of a Tennessee Walking Horse

The Tennessee Walking Horse provides the ride of your life. Choosing from points of a horse listed below, fill in the puzzle. (All points will not be used)



- 1 Hoof
- 2 Coronary Band
- 3 Pastern
- 4 Fetlock
- 5 Cannon
- 6 Hock
- 7 Gaskin
- 8 Stifle
- 9 Thigh
- 10 Point of Buttock
- 11 Croup
- 12 Point Of Hip
- 13 Loin
- 14 Back
- 15 Withers
- 16 Neck
- 17 Throatlatch
- 18 Occipital Crest (Poll)
- 19 Forelock
- 20 Eye
- 21 Face
- 22 Nose
- 23 Muzzle
- 24 Nostril
- 25 Chin
- 26 Check
- 27 Jugular Groove
- 28 Point of Shoulder
- 29 Shoulder
- 30 Pectoral Region
- 31 Forearm
- 32 Elbow
- 33 Carpus (Knee)
- 34 Cannon
- 35 Fetlock Joint
- 36 Pastern Joint
- 37 Coronary Band
- 38 Hoof
- 39 Upper Arm
- 40 Ribs
- 41 Flank
- 42 Chestnut

\_ \_ **R** \_ \_ \_ \_ \_  
 \_ \_ **I** \_ \_ \_ \_ \_  
 \_ \_ \_ \_ **D** \_ \_ \_  
 \_ \_ \_ \_ **E** \_ \_ \_  
 \_ \_ **O** \_ \_ \_  
 \_ \_ **F** \_ \_ \_ \_ \_  
 \_ \_ **Y** \_ \_ \_  
 \_ \_ \_ \_ **O** \_ \_  
 \_ \_ **U** \_ \_ \_ \_ \_  
 \_ \_ **R** \_ \_ \_ \_  
 \_ \_ **L** \_ \_ \_ \_  
 \_ \_ \_ \_ **I** \_ \_  
 \_ \_ **F** \_ \_ \_ \_ \_  
 \_ \_ **E** \_ \_ \_ \_ \_